

Swivel castor with wheel brake 541

M10 50 PUEL

Furniture Castors Series 540 GW - Wheel PUEL

-20 °C - +60 °C

+++
swivels easily

+++
wear resistant

+++
shock proof

+++
floor protective

+++
weather proof

Wheel

coated in polyurethane, 90±3 Shore Aelectrically conductive
<10⁴Ω

High quality nylon wheel centre

Zinc-die-cast housing - chrome plated

Swivel bearing with combined
plain-ball bearing

Wheel brake - glass fibre reinforced

Wheel axle revited

Swivel castor with wheel brake Wheel-Ø A x width B mm: 52x8+8

Load Capacity kg: 40

Load capacity tested according to EN 12530 and EN 12527

Overall height H mm: 62

Threat mm: M10x15

Swivel radius SR mm: 69

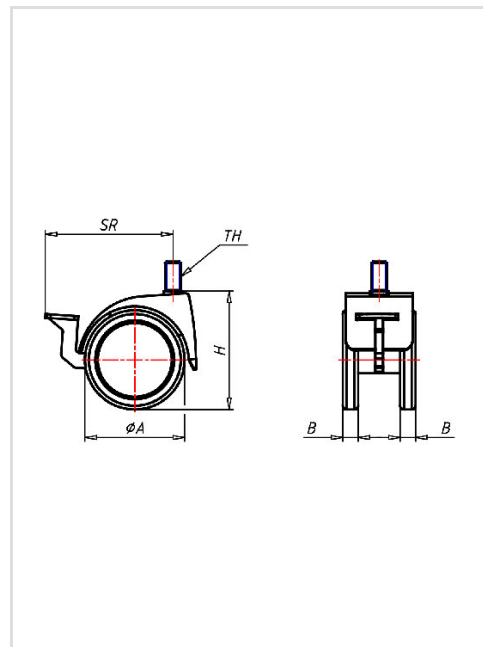
Wheel bearing: Nylon plain bearing

Advantages

- ✓ electrically conductive
- ✓ silent in motion
- ✓ low rolling resistance
- ✓ non-marking
- ✓ high resistance to shocks
- ✓ good chemical resistance

©Copyright 2024 Rollenbau GmbH, www.rollenbau.at 20.05.2024

ROLLENBAU



Applications

- Health-Professionals